



Grandma's Gravy Indoor Hemp Flower

Sample ID: G0E0191-02

Matrix: Industrial Hemp

Test ID: 5002566

Source ID:

Date Sampled: 05/12/20

Date Accepted: 05/12/20

Arete Hemp LLC

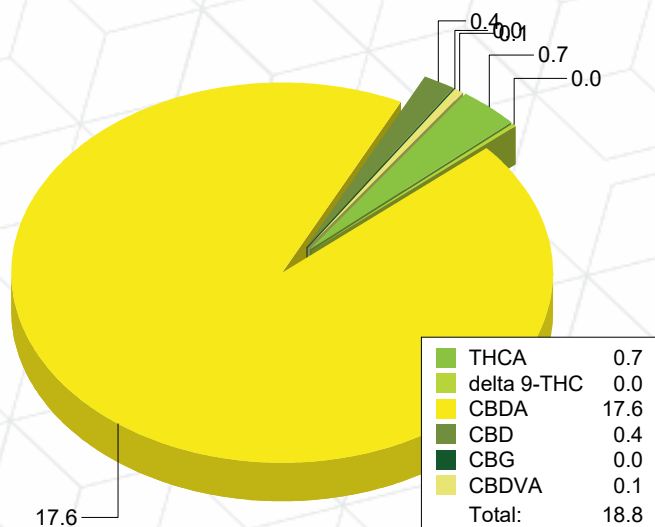
Potency Analysis

Date/Time Extracted: 05/13/20 13:52

Analysis Method/SOP: 215

Batch Identification: 2020033

	LOQ (%)	% by Wt.	mg/g	Cannabinoids Profile
Total THC	0.0098	0.6376	6.376	
Total CBD	0.0089	15.77	157.7	
THCA	0.0031	0.6799	6.799	
delta 9-THC	0.0098	0.0414	0.414	
THCV	0.0054	< LOQ	< LOQ	
THCVA	0.0020	< LOQ	< LOQ	
CBD	0.0067	0.3615	3.615	
CBDA	0.0089	17.57	175.7	
CBDV	0.0054	< LOQ	< LOQ	
CBDVA	0.0018	0.0838	0.838	
CBN	0.0032	< LOQ	< LOQ	
CBG	0.0008	0.0362	0.362	
CBGA	0.0008	< LOQ	< LOQ	
CBC	0.0096	< LOQ	< LOQ	



Moisture

Date/Time Extracted: 05/14/20 17:32

Analysis Method/SOP: 103

Moisture: 7.03 %

Action Level: 15%

Potency results are reported on a dry weight basis.

Total THC = delta 9-THC + (THCA * 0.877)

Total CBD = CBD + (CBDA * 0.877)

LOQ=Limit of Quantification, the lowest measurable concentration of an analyte.



Russell Kuhfeld

Russell Kuhfeld
Quality Officer - 5/18/2020

All QC samples met acceptance criteria of the method; data available upon request. These results relate only to the sample included on this report. The report may not be reproduced except in full, without the written permission of Green Leaf Lab.

Lab results apply to the sample as received, samples were not collected per OAR 333-007 requirements



Grandma's Gravy Indoor Hemp Flower

Sample ID: G0E0191-02

Matrix: Industrial Hemp

Test ID: 5002566

Source ID:

Date Sampled: 05/12/20

Date Accepted: 05/12/20

Arete Hemp LLC

Terpene Analysis

Date/Time Extracted: 05/13/20 13:52

Analysis Method/SOP: 204

Monoterpenes	%	mg/g	Monoterpenes	%	mg/g
Camphene	0.006133	0.06133	Camphor	< LOQ	< LOQ
3-Carene	< LOQ	< LOQ	alpha-Cedrene	< LOQ	< LOQ
Cedrol	< LOQ	< LOQ	Endo-fenchyl alcohol	0.01396	0.1396
Eucalyptol	< LOQ	< LOQ	Fenchone	< LOQ	< LOQ
Geraniol	< LOQ	< LOQ	Geranyl acetate	< LOQ	< LOQ
Hexahydrothymol	< LOQ	< LOQ	Isoborneol	< LOQ	< LOQ
Isopulegol	< LOQ	< LOQ	Limonene	0.08836	0.8836
Linalool	0.07224	0.7224	p-Mentha-1,5-diene	< LOQ	< LOQ
beta-Myrcene	1.331	13.31	alpha-Pinene	0.2023	2.023
beta-Pinene	0.07891	0.7891	Pulegone	< LOQ	< LOQ
Sabinene	< LOQ	< LOQ	Sabinene hydrate	< LOQ	< LOQ
gamma-Terpinene	< LOQ	< LOQ	alpha-Terpinene	< LOQ	< LOQ
Terpineol	0.01855	0.1855	Terpinolene	< LOQ	< LOQ
B Y-Terpineol	< LOQ	< LOQ	Nerol	< LOQ	< LOQ
A-Terpineol	0.02944	0.2944	Borneol	< LOQ	< LOQ
Ocimene isomer II	< LOQ	< LOQ	Ocimene isomer I	< LOQ	< LOQ
Sesquiterpenes	%	mg/g	Sesquiterpenes	%	mg/g
alpha-Bisabolol	0.1053	1.053	beta-Caryophyllene	0.06197	0.6197
Caryophyllene Oxide	< LOQ	< LOQ	Guaiol	0.06051	0.6051
alpha-Humulene	0.01650	0.165	trans-Nerolidol	< LOQ	< LOQ
Valencene	0.009166	0.09166	cis-Nerolidol	< LOQ	< LOQ
Total Terpenes	2.076	20.76			

<LOQ - Results below the Limit of Quantitation - Terpenes profile/analysis are not accredited to ORELAP TNI 2009 Quality Standards.