



### Dragon's Breath Indoor Hemp

Sample ID: G0F0251-01

Matrix: Industrial Hemp

Test ID: 5008159

Source ID:

Date Sampled: 06/13/20

Date Accepted: 06/13/20

Harvest/Prod. Date: 04/06/2020

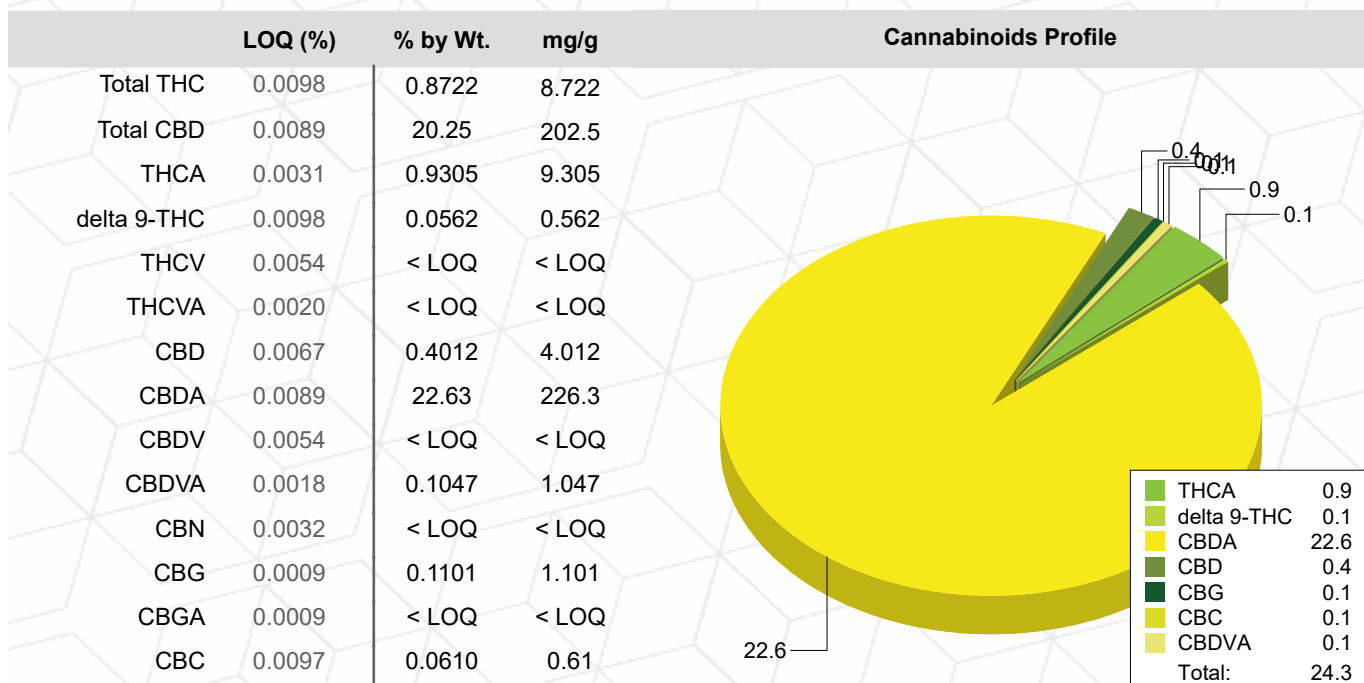
Arete Hemp LLC

### Potency Analysis

Date/Time Extracted: 06/17/20 10:53

Analysis Method/SOP: 215

Batch Identification: 2025030



### Moisture

Date/Time Extracted: 06/16/20 12:02

Analysis Method/SOP: 103

Moisture: 7.11 %

Action Level: 15%

Potency results are reported on a dry weight basis.

Total THC = delta 9-THC + (THCA \* 0.877)

Total CBD = CBD + (CBDA \* 0.877)

LOQ=Limit of Quantification, the lowest measurable concentration of an analyte.



*[Signature]*

Eric Wendt  
Chief Science Officer - 6/18/2020

All QC samples met acceptance criteria of the method; data available upon request. These results relate only to the sample included on this report. The report may not be reproduced except in full, without the written permission of Green Leaf Lab.

Lab results apply to the sample as received, samples were not collected per OAR 333-007 requirements



### Dragon's Breath Indoor Hemp

Sample ID: G0F0251-01

Matrix: Industrial Hemp

Test ID: 5008159

Source ID:

Date Sampled: 06/13/20

Date Accepted: 06/13/20

Harvest/Prod. Date: 04/06/2020

**Arete Hemp LLC**

### Terpene Analysis

Date/Time Extracted: 06/17/20 10:53

Analysis Method/SOP: 204

Monoterpenes	%	mg/g	Monoterpenes	%	mg/g
Camphene	< LOQ	< LOQ	Camphor	< LOQ	< LOQ
3-Carene	< LOQ	< LOQ	alpha-Cedrene	< LOQ	< LOQ
Cedrol	< LOQ	< LOQ	Endo-fenchyl alcohol	0.01054	0.1054
Eucalyptol	< LOQ	< LOQ	Fenchone	< LOQ	< LOQ
Geraniol	< LOQ	< LOQ	Geranyl acetate	< LOQ	< LOQ
Hexahydrothymol	< LOQ	< LOQ	Isoborneol	< LOQ	< LOQ
Isopulegol	< LOQ	< LOQ	Limonene	0.04897	0.4897
Linalool	0.09485	0.9485	p-Mentha-1,5-diene	< LOQ	< LOQ
beta-Myrcene	0.8068	8.068	alpha-Pinene	0.07571	0.7571
beta-Pinene	0.02945	0.2945	Pulegone	< LOQ	< LOQ
Sabinene	< LOQ	< LOQ	Sabinene hydrate	< LOQ	< LOQ
gamma-Terpinene	< LOQ	< LOQ	alpha-Terpinene	< LOQ	< LOQ
Terpineol	0.01860	0.186	Terpinolene	< LOQ	< LOQ
B Y-Terpineol	< LOQ	< LOQ	Nerol	< LOQ	< LOQ
A-Terpineol	0.02952	0.2952	Borneol	< LOQ	< LOQ
Ocimene isomer II	< LOQ	< LOQ	Ocimene isomer I	< LOQ	< LOQ
Sesquiterpenes	%	mg/g	Sesquiterpenes	%	mg/g
alpha-Bisabolol	0.01871	0.1871	beta-Caryophyllene	0.08376	0.8376
Caryophyllene Oxide	< LOQ	< LOQ	Guaiol	0.07011	0.7011
alpha-Humulene	0.02286	0.2286	trans-Nerolidol	< LOQ	< LOQ
Valencene	0.01967	0.1967	cis-Nerolidol	< LOQ	< LOQ
<b>Total Terpenes</b>	<b>1.311</b>	<b>13.11</b>			

<LOQ - Results below the Limit of Quantitation - Terpenes profile/analysis are not accredited to ORELAP TNI 2009 Quality Standards.