

EVIO Labs Medford (pka Kenevir Research)
540 East Vilas Road, Suite F, Central Point, OR 97502
541-668-7444 / OLCC 010-1001626980D / www.EVIO Labs.com

Spectrum



Sample ID: M201433-01

Matrix: Hemp

METRC Batch #:

Sampling Method/SOP: Client

Date Sampled: NA

Date Accepted: 09/17/20

Harvest/Process Lot ID:

Batch ID:

Batch Size (g):

Unit for Sale:

Harvest/Production Date:

Cannabinoid Analysis

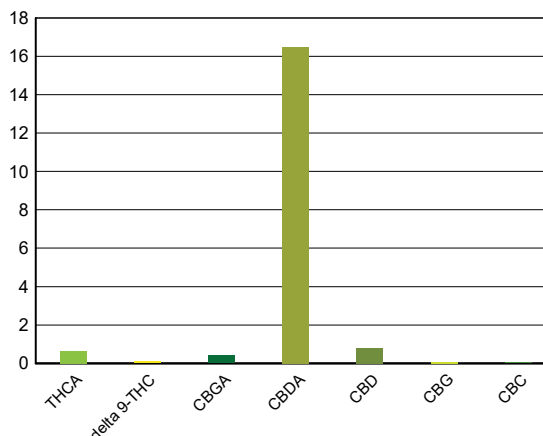
FOR INFORMATIONAL USE ONLY - NOT FOR REGULATORY PURPOSES

Date/Time Extracted: 09/21/20 12:16

Analysis Method/SOP: SOP.T.40.020

Date/Time Analyzed: 09/21/20 22:05

Cannabinoids	LOQ(%)	mg/g	% weight	Cannabinoid Profile
Total THC ((THCA*0.877)+Δ9THC)		6.60	0.660	
Total CBD ((CBDA*0.877)+CBD)		152.85	15.285	
THCA	0.040	6.50	0.650	
delta 9-THC	0.040	0.90	0.090	
delta 8-THC	0.040	< LOQ	< LOQ	
THCV	0.040	< LOQ	< LOQ	
CBGA	0.040	4.15	0.415	
CBDA	0.040	165.00	16.5	
CBD	0.040	8.14	0.814	
CBDV	0.040	< LOQ	< LOQ	
CBN	0.040	< LOQ	< LOQ	
CBG	0.040	0.72	0.072	
CBC	0.040	0.51	0.051	
THCV-A	0.040	< LOQ	< LOQ	
CBDV-A	0.040	0.53	0.053	
CBCA	0.040	7.57	0.757	
Sum of tested Cannabinoids	0.040	194.00	19.4	



"Total THC" and "Total CBD" are calculated values and are an Oregon reporting requirement (OAR 333-064-0100). For Cannabinoid analysis, only delta 9-THC, THCA, CBD, CBDA are ORELAP accredited analytes. Cannabinoid values reported for plant matter are dry weight corrected; Oregon Water Activity action level is 0.65Aw and Oregon Moisture Content action level is 15%, Samples above limit will be highlighted RED; FD = Field Duplicate; LOQ = Limit of Quantitation.

Stephanie Moon
Laboratory Director - 9/22/2020

Page 1 of 2