



### Shockwave

Sample ID: G0K0414-03

Matrix: Industrial Hemp

Test ID: 5012831

Source ID:

Date Sampled: 11/18/20

Date Accepted: 11/18/20

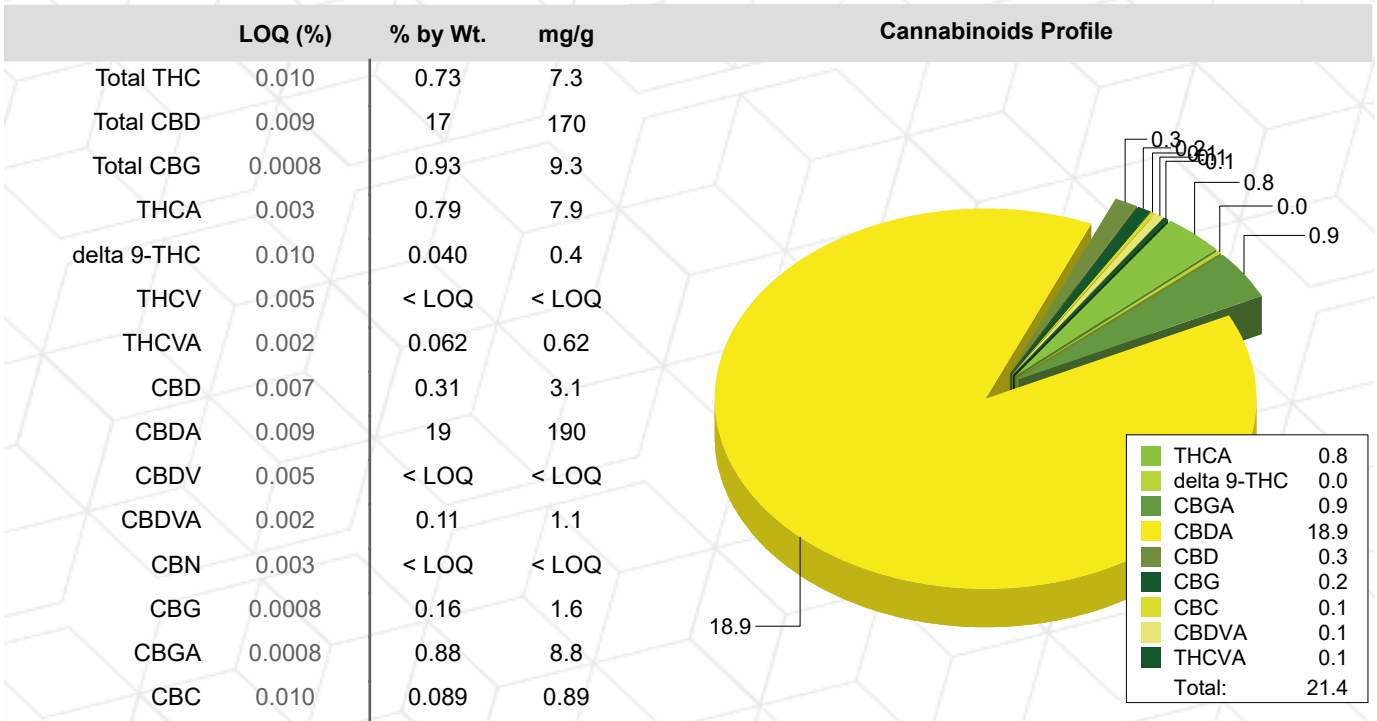
Arete Hemp LLC

### Potency Analysis

Date/Time Extracted: 11/21/20 10:51

Analysis Method/SOP: 215

Batch Identification: 2047063



### Moisture

Date/Time Extracted: 11/21/20 16:16

Analysis Method/SOP: 103

Moisture: 6.27 %

Action Level: 15%

Potency results are reported on a dry weight basis.

Total THC = delta 9-THC + (THCA \* 0.877)

Total CBD = CBD + (CBDA \* 0.877)

Total CBG = CBG + (CBGA \* 0.878)

LOQ=Limit of Quantification, the lowest measurable concentration of an analyte.



Eric Wendt  
Chief Science Officer - 11/25/2020

All QC samples met acceptance criteria of the method; data available upon request. These results relate only to the sample included on this report. The report may not be reproduced except in full, without the written permission of Green Leaf Lab.

This is for informational testing and is not compliance testing. Lab results apply to the sample as received.



### Shockwave

Sample ID: G0K0414-03

Matrix: Industrial Hemp

Test ID: 5012831

Source ID:

Date Sampled: 11/18/20

Date Accepted: 11/18/20

**Arete Hemp LLC**

### Terpene Analysis

Date/Time Extracted: 11/21/20 10:51

Analysis Method/SOP: 204

Monoterpenes	%	mg/g	Monoterpenes	%	mg/g
Camphene	< LOQ	< LOQ	Camphor	< LOQ	< LOQ
3-Carene	< LOQ	< LOQ	alpha-Cedrene	< LOQ	< LOQ
Cedrol	< LOQ	< LOQ	Endo-fenchyl alcohol	0.01221	0.1221
Eucalyptol	< LOQ	< LOQ	Fenchone	< LOQ	< LOQ
Geraniol	< LOQ	< LOQ	Geranyl acetate	< LOQ	< LOQ
Hexahydrothymol	< LOQ	< LOQ	Isoborneol	< LOQ	< LOQ
Isopulegol	< LOQ	< LOQ	Limonene	0.03373	0.3373
Linalool	0.04976	0.4976	p-Mentha-1,5-diene	< LOQ	< LOQ
beta-Myrcene	0.2935	2.935	alpha-Pinene	< LOQ	< LOQ
beta-Pinene	0.006284	0.06284	Pulegone	< LOQ	< LOQ
Sabinene	< LOQ	< LOQ	Sabinene hydrate	< LOQ	< LOQ
gamma-Terpinene	< LOQ	< LOQ	alpha-Terpinene	< LOQ	< LOQ
Terpineol	< LOQ	< LOQ	Terpinolene	< LOQ	< LOQ
B Y-Terpineol	< LOQ	< LOQ	Nerol	< LOQ	< LOQ
A-Terpineol	< LOQ	< LOQ	Borneol	< LOQ	< LOQ
Ocimene isomer II	< LOQ	< LOQ	Ocimene isomer I	< LOQ	< LOQ
Sesquiterpenes	%	mg/g	Sesquiterpenes	%	mg/g
alpha-Bisabolol	0.2799	2.799	beta-Caryophyllene	0.1539	1.539
Caryophyllene Oxide	0.03385	0.3385	Guaiol	0.1107	1.107
alpha-Humulene	0.04997	0.4997	trans-Nerolidol	< LOQ	< LOQ
Valencene	< LOQ	< LOQ	cis-Nerolidol	< LOQ	< LOQ
<b>Total Terpenes</b>	<b>1.024</b>	<b>10.24</b>			

<LOQ - Results below the Limit of Quantitation - Terpenes profile/analysis are not accredited to ORELAP TNI 2009 Quality Standards.



Eric Wendt  
Chief Science Officer - 11/25/2020

All QC samples met acceptance criteria of the method; data available upon request. These results relate only to the sample included on this report. The report may not be reproduced except in full, without the written permission of Green Leaf Lab.

This is for informational testing and is not compliance testing. Lab results apply to the sample as received.