



### Chocolate Kush Indoor

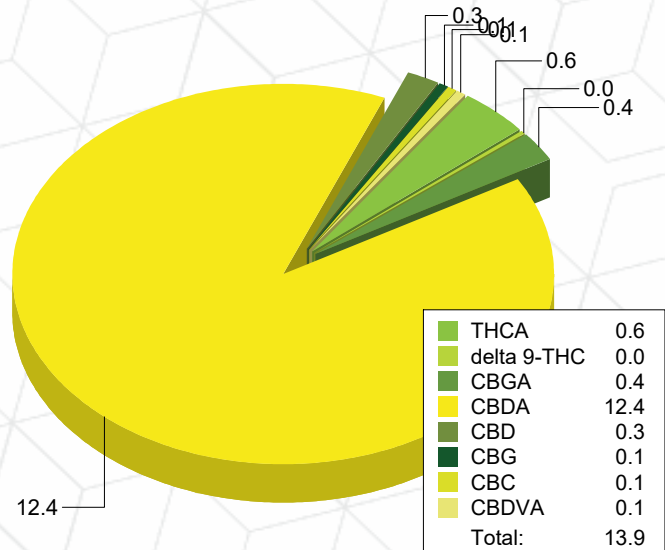
Sample ID: G1B0309-04 Matrix: Industrial Hemp  
Test ID: 5013255  
Source ID:  
Date Sampled: 02/17/21 Date Accepted: 02/17/21

Arete Hemp LLC

### Potency Analysis

Date/Time Extracted: 02/20/21 09:53 Analysis Method/SOP: 215 Batch Identification: 2108052

	LOQ (%)	% by Wt.	mg/g	Cannabinoids Profile	
Total THC	0.010	0.55	5.5		
Total CBD	0.009	11	110		
Total CBG	0.0009	0.36	3.6		
THCA	0.003	0.59	5.9		
delta 9-THC	0.010	0.025	0.25		
delta 8-THC	0.005	< LOQ	< LOQ		
THCV	0.005	< LOQ	< LOQ		
THCVA	0.002	< LOQ	< LOQ		
CBD	0.007	0.27	2.7		
CBDA	0.009	12	120		
CBDV	0.022	< LOQ	< LOQ		
CBDVA	0.007	0.080	0.8		
CBN	0.003	< LOQ	< LOQ		
CBG	0.0009	0.056	0.56		
CBGA	0.0009	0.35	3.5		
CBC	0.010	0.078	0.78		



### Moisture

Date/Time Extracted: 02/19/21 13:17 Analysis Method/SOP: 103  
Moisture: 8.04 % Action Level: 15%

Potency results are reported on a dry weight basis.  
Total THC = delta 9-THC + (THCA \* 0.877)  
Total CBD = CBD + (CBDA \* 0.877)  
Total CBG = CBG + (CBGA \* 0.878)  
LOQ=Limit of Quantification, the lowest measurable concentration of an analyte.



*Russell Kuhfeld*  
Russell Kuhfeld  
Quality Officer - 2/22/2021

All QC samples met acceptance criteria of the method; data available upon request. These results relate only to the sample included on this report. The report may not be reproduced except in full, without the written permission of Green Leaf Lab. This is for informational testing and is not compliance testing. Lab results apply to the sample as received.



### Chocolate Kush Indoor

Sample ID: G1B0309-04

Matrix: Industrial Hemp

Test ID: 5013255

Source ID:

Date Sampled: 02/17/21

Date Accepted: 02/17/21

**Arete Hemp LLC**

### Terpene Analysis

Date/Time Extracted: 02/20/21 09:53

Analysis Method/SOP: 204

Monoterpenes	%	mg/g	Monoterpenes	%	mg/g
Camphene	< LOQ	< LOQ	Camphor	< LOQ	< LOQ
3-Carene	< LOQ	< LOQ	alpha-Cedrene	< LOQ	< LOQ
Cedrol	< LOQ	< LOQ	Endo-fenchyl alcohol	< LOQ	< LOQ
Eucalyptol	< LOQ	< LOQ	Fenchone	< LOQ	< LOQ
Geraniol	< LOQ	< LOQ	Geranyl acetate	< LOQ	< LOQ
Hexahydrothymol	< LOQ	< LOQ	Isoborneol	< LOQ	< LOQ
Isopulegol	< LOQ	< LOQ	Limonene	0.02406	0.2406
Linalool	0.04300	0.43	p-Mentha-1,5-diene	< LOQ	< LOQ
beta-Myrcene	0.1921	1.921	alpha-Pinene	< LOQ	< LOQ
beta-Pinene	< LOQ	< LOQ	Pulegone	< LOQ	< LOQ
Sabinene	< LOQ	< LOQ	Sabinene hydrate	< LOQ	< LOQ
gamma-Terpinene	< LOQ	< LOQ	alpha-Terpinene	< LOQ	< LOQ
Terpineol	< LOQ	< LOQ	Terpinolene	< LOQ	< LOQ
B Y-Terpineol	< LOQ	< LOQ	Nerol	< LOQ	< LOQ
A-Terpineol	< LOQ	< LOQ	Borneol	< LOQ	< LOQ
Ocimene isomer II	0.02295	0.2295	Ocimene isomer I	< LOQ	< LOQ
Sesquiterpenes	%	mg/g	Sesquiterpenes	%	mg/g
alpha-Bisabolol	0.1084	1.084	beta-Caryophyllene	0.1790	1.79
Caryophyllene Oxide	0.03827	0.3827	Guaiol	< LOQ	< LOQ
alpha-Humulene	0.07750	0.775	trans-Nerolidol	< LOQ	< LOQ
Valencene	0.05795	0.5795	cis-Nerolidol	< LOQ	< LOQ
<b>Total Terpenes</b>	<b>0.7433</b>	<b>7.433</b>			

<LOQ - Results below the Limit of Quantitation - Terpenes profile/analysis are not accredited to ORELAP TNI 2009 Quality Standards.



*Russell Kuhfeld*

Russell Kuhfeld  
Quality Officer - 2/22/2021

All QC samples met acceptance criteria of the method; data available upon request. These results relate only to the sample included on this report. The report may not be reproduced except in full, without the written permission of Green Leaf Lab.

This is for informational testing and is not compliance testing. Lab results apply to the sample as received.