

Arete

Sample: 12-15-2021-15904

Sample Received: 12/15/2021;

Report Created: 12/17/2021; Expires: 12/17/2022

Blue Dream Rosin Hash
Concentrate & Extracts



10.280%

Total THC

0.284%

Δ-9 THC

87.543%

Total Cannabinoids

75.596%

Total CBD

Cannabinoids

Complete

(Testing Method: HPLC, CON-P-3000.07)

Analyst: Natalie Siracusa; Date Tested: 12/15/2021

Analyte	LOD	LOQ	Mass	Mass	
	%	%	%	mg/g	
Δ-8-Tetrahydrocannabinol (Δ-8 THC)	0.1010	0.1515	ND	ND	
Δ-9-Tetrahydrocannabinol (Δ-9 THC)	0.1010	0.1515	0.284	2.844	
Δ-9-Tetrahydrocannabinolic Acid (THCA-A)	0.1010	0.1515	11.398	113.980	
Tetrahydrocannabinol Acetate (THCO)	0.1010	0.1515	ND	ND	
Δ-9-Tetrahydrocannabiphorol (Δ-9-THCP)	0.1010	0.1515	ND	ND	
Δ-9-Tetrahydrocannabivarin (Δ-9-THCV)	0.1010	0.1515	ND	ND	
Δ-9-Tetrahydrocannabivarinic Acid (Δ-9-THCVA)	0.1010	0.1515	ND	ND	
R-Δ-10-Tetrahydrocannabinol (R-Δ-10-THC)	0.1010	0.1515	ND	ND	
S-Δ-10-Tetrahydrocannabinol (S-Δ-10-THC)	0.1010	0.1515	ND	ND	
Cannabidivarin (CBDV)	0.1010	0.1515	ND	ND	
Cannabidivarinic Acid (CBDVA)	0.1010	0.1515	ND	ND	
Cannabidiol (CBD)	0.1010	0.1515	75.596	755.964	
Cannabidiolic Acid (CBDA)	0.1010	0.1515	ND	ND	
Cannabigerol (CBG)	0.1010	0.1515	ND	ND	
Cannabigerolic Acid (CBGA)	0.1010	0.1515	0.265	2.646	
Cannabinol (CBN)	0.1010	0.1515	<LOQ	<LOQ	
Cannabinolic Acid (CBNA)	0.1010	0.1515	ND	ND	
Cannabichromene (CBC)	0.0909	0.1515	<LOQ	<LOQ	
Cannabichromenic Acid (CBCA)	0.1010	0.1515	ND	ND	
Total			87.543	875.434	

Total THC = THCa * 0.877 + Δ9-THC; Total CBD = CBDa * 0.877 + CBD; LOQ = Limit of Quantitation; ND = Not Detected.

Total THC Measurement of Uncertainty: ± 0.030%

Total CBD Measurement of Uncertainty: ± 1.000%

THCO potency analysis does not designate quantitative specificity of Δ-8-THCO and Δ-9-THCO isomers



New Bloom Labs
16121 Heritage Park Drive, A500
Chattanooga, TN 37416
(844) 837-8223
TN DEA#: RN0563975
AT-2868: ISO/IEC 17025:2017

Natalie Siracusa
Natalie Siracusa
Laboratory Director

New Bloom Labs
10606 Shady Trail, 105
Dallas, TX 75520
(844) 837-8223
TX DEA#: RN0594653
AT-2868: ISO/IEC 17025:2017

Powered by
reLIMS
info@relims.com

Arete

Sample: 12-15-2021-15904

Sample Received: 12/15/2021;

Report Created: 12/17/2021; Expires: 12/17/2022

Blue Dream Rosin Hash
Concentrate & Extracts



Terpenes

(Testing Method: HS-GC/MS, CON-P-4000.03)

Analyst: Natalie Siracusa; Date Tested: 12/15/2021

Analyte	LOD	LOQ	Mass	Mass	
	PPM	PPM	PPM	mg/g	
α-Bisabolol	0.750	3.000	1373.529	1.374	
α-Humulene	0.750	3.000	12421.373	12.421	
α-Pinene	0.750	3.000	4402.549	4.403	
α-Terpinene	0.750	3.000	ND	ND	
1,8-Cineole	0.750	3.000	33.161	0.033	
β-Caryophyllene	0.750	3.000	66987.255	66.987	
β-Myrcene	0.750	3.000	8372.843	8.373	
Borneol	0.750	3.000	213.559	0.214	
Camphene	0.750	3.000	325.539	0.326	
Carene	0.750	3.000	ND	ND	
Caryophyllene Oxide	0.750	3.000	3467.941	3.468	
Citral	0.750	3.000	ND	ND	
Dihydrocarveol	0.750	3.000	ND	ND	
Fenchone	0.750	3.000	ND	ND	
γ-Terpinene	0.750	3.000	64.510	0.065	
Limonene	0.750	3.000	10247.353	10.247	
Linalool	0.750	3.000	5735.392	5.735	
Menthol	0.750	3.000	ND	ND	
Nerolidol	0.750	3.000	ND	ND	
Ocimene	0.750	3.000	ND	ND	
Pulegone	0.750	3.000	ND	ND	
Terpinolene	0.750	3.000	496.618	0.497	
Total			114141.621	114.142	11.414 %

Primary Aromas

Cinnamon



Hops



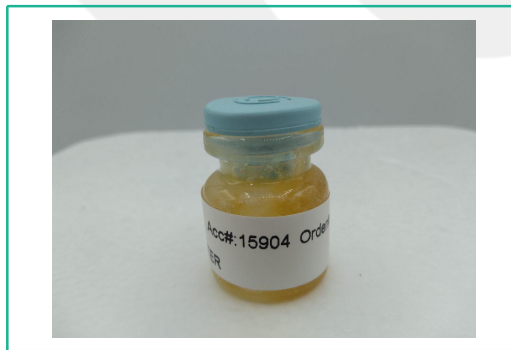
Lime



Clove



Lavender



Total terpenes value is qualitative and includes concentrations outside the assay quantitative analytical range.



New Bloom Labs
16121 Heritage Park Drive, A500
Chattanooga, TN 37416
(844) 837-8223
TN DEA#: RN0563975
AT-2868: ISO/IEC 17025:2017

Natalie Siracusa
Laboratory Director

New Bloom Labs
10606 Shady Trail, 105
Dallas, TX 75520
(844) 837-8223
TX DEA#: RN0594653
AT-2868: ISO/IEC 17025:2017

Powered by
reLIMS
info@relims.com